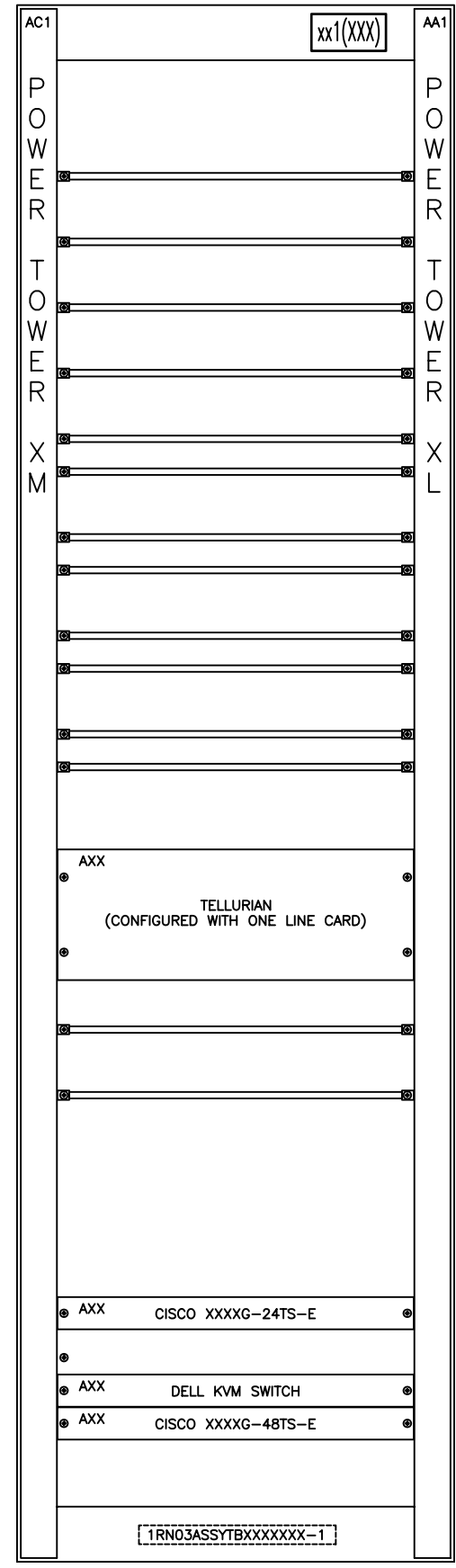
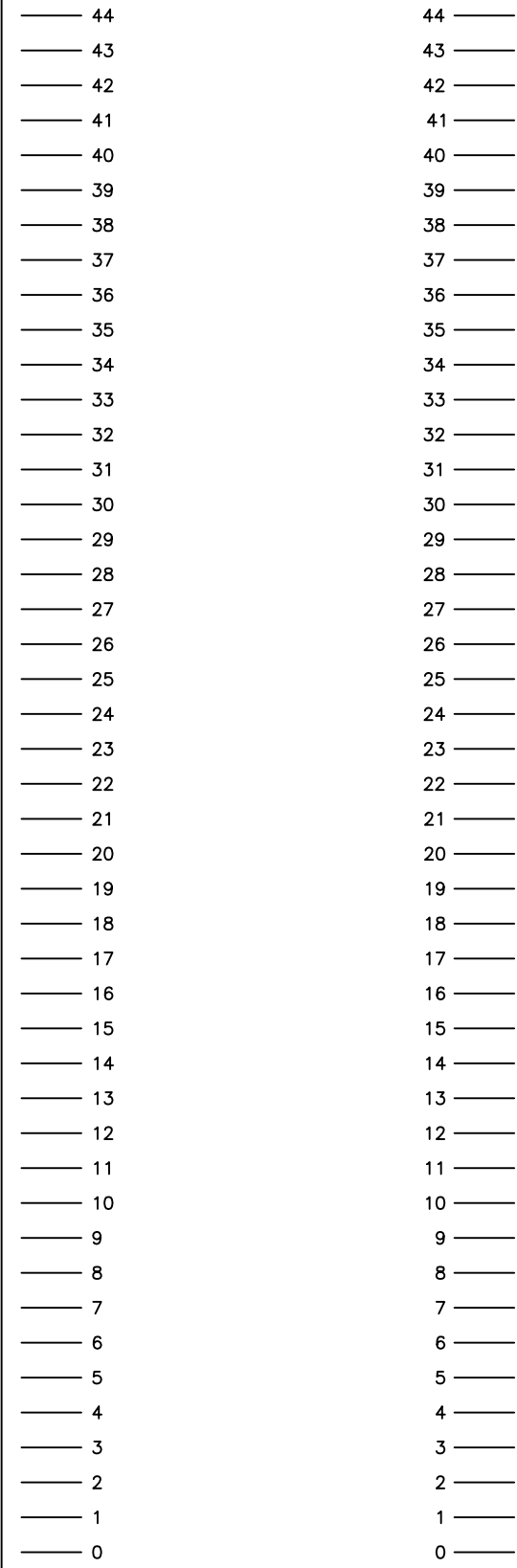
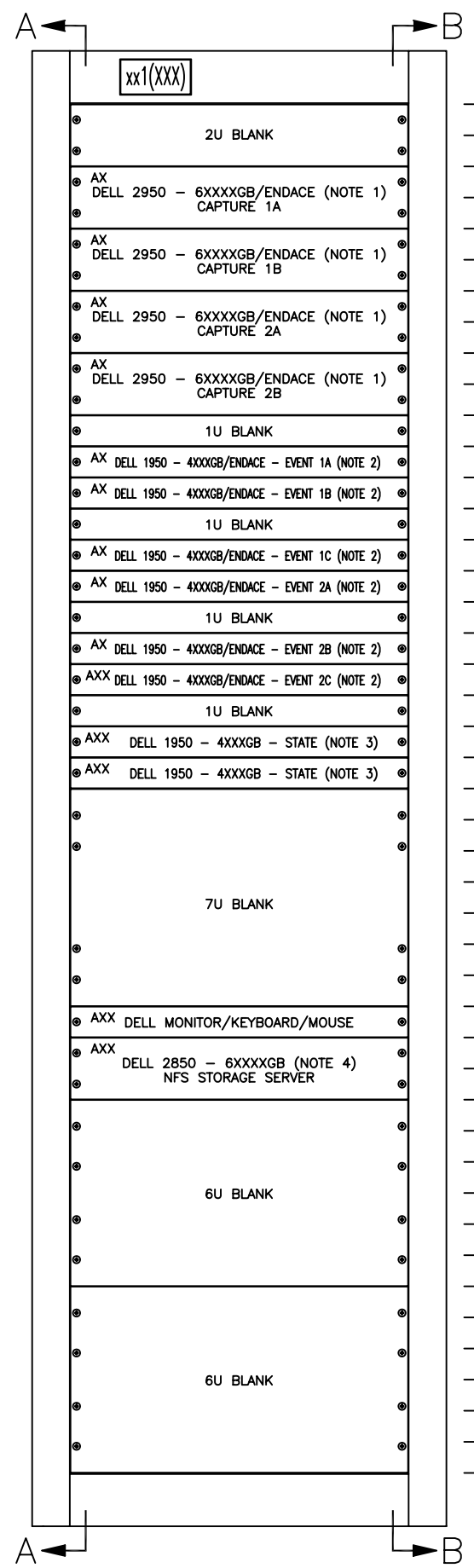


REVISIONS				
ZONE	LTR	DESCRIPTION	DATE	APPROVED



- NOTES (CONFIGURE AS FOLLOWS):
- HARD DRIVES - 6XXXXGB
 PC11 - BLANK
 PC12 - ENDACE CARD (WITHOUT GATE ARRAY BOARD)
 PC13 - BLANK
 (REFER TO CONFIG. 2950 - DWG TBXXXXXXXX-1)
 - HARD DRIVES - 4XXXXGB
 PC11 - ENDACE CARD (WITH GATE ARRAY BOARD)
 PC12 - BLANK
 (REFER TO CONFIG. 1950 - DWG TBXXXXXXXX-2)
 - HARD DRIVES - 4XXXXGB
 PC11 - BLANK
 PC12 - BLANK
 (REFER TO CONFIG. 1950 - DWG TBXXXXXXXX-1)
 - HARD DRIVES - 6XXXXGB
 PC11 - BLANK
 PC12 - BLANK
 PC13 - BLANK
 (REFER TO CONFIG. 2850 - DWG TBXXXXXXXX-1)

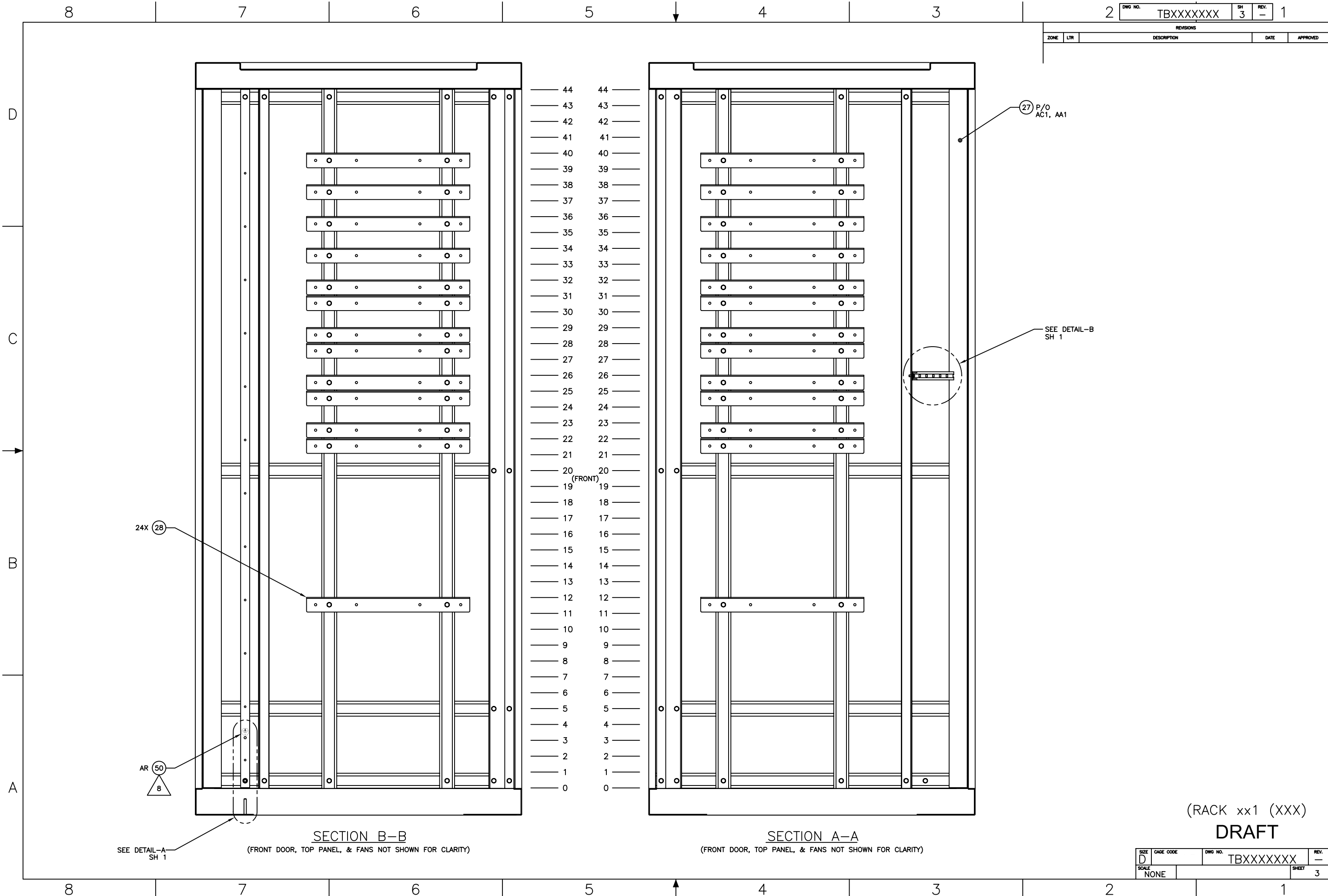
FRONT VIEW
 (FRONT DOOR, TOP PANEL, & FANS NOT SHOWN FOR CLARITY)

REAR VIEW
 (FRONT DOOR, TOP PANEL, & FANS NOT SHOWN FOR CLARITY)

(RACK xx1 (XXX))
DRAFT

SIZE D	CAGE CODE	DWG NO. TBXXXXXXXX	REV. -
SCALE NONE		SHEET 2	

REVISIONS				
ZONE	LTR	DESCRIPTION	DATE	APPROVED



24X (28)

AR (50)

27 P/O ACT, AA1

SEE DETAIL-B SH 1

SECTION B-B

(FRONT DOOR, TOP PANEL, & FANS NOT SHOWN FOR CLARITY)

SECTION A-A

(FRONT DOOR, TOP PANEL, & FANS NOT SHOWN FOR CLARITY)

(RACK xx1 (XXX))

DRAFT

SIZE D	CAGE CODE	DWG NO. TBXXXXXXXX	REV. 1
SCALE NONE		SHEET 3	